



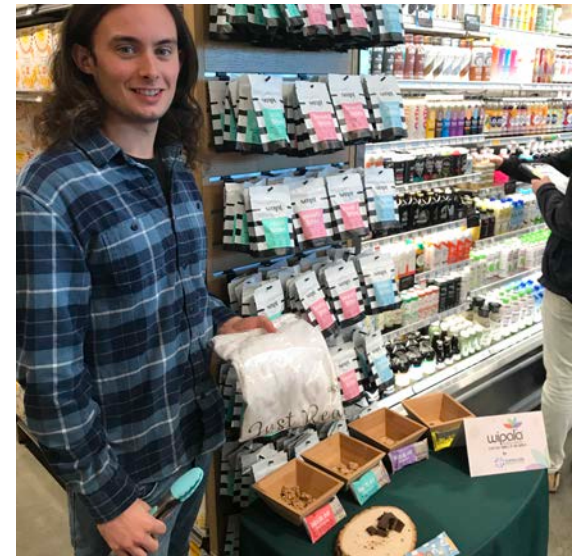
# MPL & EVERGLOBE PARTNERSHIP 2021



**Presented By:**  
Everglobe CEO, Jorge Pareja

## WHO WE ARE?

- 🌐 We are an International Trading Company which supports small and medium companies by introducing their specialty products to the U.S.A. and Latin American Markets.
- 🌐 As such we offer marketing, consulting, import, and export of products. Resulting in strong sales through an array of different channels as wholesalers, retailers, and e-markets.



## WHERE ARE WE LOCATED?

- 🌐 Los Angeles, California. U.S.A.
  - Located in the diverse bustling city of Los Angeles which is home to 40 million people. One of the innovative influential cities in the US a market of 330 million people alone.
- 🌐 Panama City, Panama.
  - We also have an office in Panama. Acting as a gateway hub to all Central & South America, and the Caribbean: a market of 647 million people.



## HOW CAN WE PARTNER WITH MPL MEMBERS ?


### **We need products !**

- Your clients have a product we are searching for. Let's set up a meeting and connect.
- You present us the product or the client for analysis and review as part of your enhanced services.

### **Your client is looking to expand to new markets**

- Your client is reviewing the possibilities of entering new markets, specifically to the U.S. or Latin America.
- You introduce the client to us for product analysis and review as part of your enhanced services.



## HOW IT WORKS ?

 Everglobe<sup>®</sup> will inquire regularly for products based of consumer demand through MPL network.

- MPL Members check among their clients if this product is available and showcase it to us.
- Everglobe<sup>®</sup> reviews the product potential and the client needs to establish the best course of action and a “tailor made” business proposal.



## **BENEFITS FOR MPL MEMBERS ?**





-  **Be able to offer their Clients their services as a trading company throughout a trusted independent MPL partner.**
-  **If Product is selected ....**
  - MPL members increases their business through significant cargo volume from its new client's market.
  - MPL member earns a commission for the product purchased or sold in the new market.
  - A collaboration among members as cargo will be handled at both ends by an MPL member and MPL partner.

 Commissions will vary depending the business but will be typically 2% to 5% of FOB price.



## CONTACT US

### Everglobe® Corporation

-  Jorge Pareja. CEO
-  Email: [jpareja@everglobecorp.com](mailto:jpareja@everglobecorp.com)
-  [www.everglobecorp.com](http://www.everglobecorp.com)
-  You can contact us via LinkedIn and Facebook.



**THANK YOU!**  
We Look Forward to Cooperating With  
You In The Near Future





# IMAGES SLIDES





