



## REGISTRATION FORM

COMPANY .....  
 ADDRESS .....  
 PHONE .....  
 FAX .....  
 E-MAIL .....

MPL MEMBER  NON MPL MEMBER

NAME OF ATTENDEE .....  
 NAME OF SPOUSE / PARTNER .....  
 NAMES OF OTHERS ATTENDEES .....  
 NAMES OF OTHERS ATTENDEES .....

ARRIVAL THURSDAY 9<sup>TH</sup> OF OCTOBER 2025  
 OFFICIAL DEPARTURE SUNDAY 12<sup>TH</sup> OCTOBER 2025

For sports events players (golf, tennis & paddle) only, arrival 8th of october 2025  
 For those who will choose to participate in the excursion day departure on the 13th of october 2025

**EARLY BIRD RATE!**  
**BOOK AND PAY BY THE 30<sup>TH</sup> OF JANUARY 2025,**  
**AND GET EUR 100,00 DISCOUNT**  
**PER ROOM ON THE FULL CONFERENCE PACKAGE!**



- SINGLE - arrival 9<sup>th</sup> of October – departure 12<sup>st</sup> October 2025  EUR 2875,00  
 Spouse (to be added to the single)  EUR 950,00  
 (Partner package including Breakfast for 3 days, lunches, cocktail dinner, and all evenings)
- DOUBLE / TWIN - arrival 9<sup>th</sup> of October – departure 12<sup>st</sup> October 2025  EUR 2250,00  
 (inclusive of conference room access – OTO MEETINGS) (per person)
- Single extra night's accommodation-including breakfast  EUR 285,00
- Double/Twin extra night's accommodation-including breakfast  EUR 315,00



**WITHOUT ACCOMMODATION**

Conference package only

EUR 2075,00

**NON MPL MEMBERS FEE:**

EUR 185,00

**SPORTS EVENTS**

**PARTICIPATE IN THE MPL GOLF TOURNAMENT**

Thursday 9<sup>th</sup> October **INFORMATION IN DUE COURSE**  
[PGA Aroeira Lisboa](#)

EUR (price soon!)

**PARTICIPATE IN THE MPL TENNIS TOURNAMENT**

Thursday 9<sup>th</sup> October **INFORMATION IN DUE COURSE**  
[Aroeira Tennis & Padel](#)

EUR (price soon!)

**PARTICIPATE IN THE MPL PADDLE TOURNAMENT**

Thursday 9<sup>th</sup> October **INFORMATION IN DUE COURSE**  
[Aroeira Tennis & Padel](#)

EUR (price soon!)

**PARTICIPATE IN THE MPL FOOTBALL MATCH**

Saturday 11<sup>th</sup> October – Appointment in the lobby

Player's name: .....

Player's name: .....

Player's name: .....

EUR (price soon!)

**OPTIONAL EXTRA DAY WITH ACCOMMODATION**

Sunday 12<sup>th</sup> of October **INFORMATION IN DUE COURSE**

EUR (price soon!)

Single

EUR (price soon!)

Double/Twin for 2 people

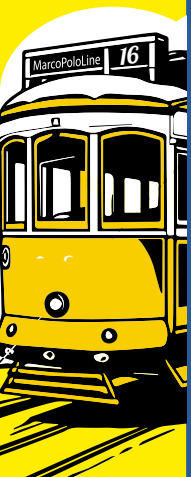
EUR (price soon!)

OPTIONAL - NO accommodation, but includes excursion/lunch

EUR (price soon!)

**[Visa instructions Link](#)**

**Please return this completed form to:**  
**[sophie@marcopololine.com](mailto:sophie@marcopololine.com)**





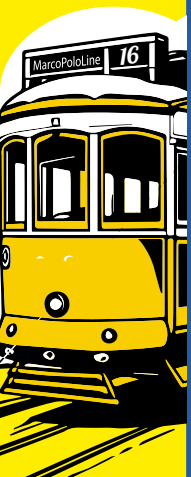


**Epic Sana Lisboa**

Av. Eng. Duarte Pacheco, 15 - 1070-100 Lisboa - Portugal

Visit Website: [Epic Sana Lisboa](http://Epic Sana Lisboa)





**IF**

**Aeroporto Internacional de Lisboa**

Distance From Property: 9 KM

Phone Number: +351 21 841 3500 - Visit Website : [Lisbon Airport](#)

Alameda das Comunidades Portuguesas, 1700-111 Lisboa, Portugal



[Visa instructions Link](#)

Please return this completed form to:  
[sophie@marcopoline.com](mailto:sophie@marcopoline.com)